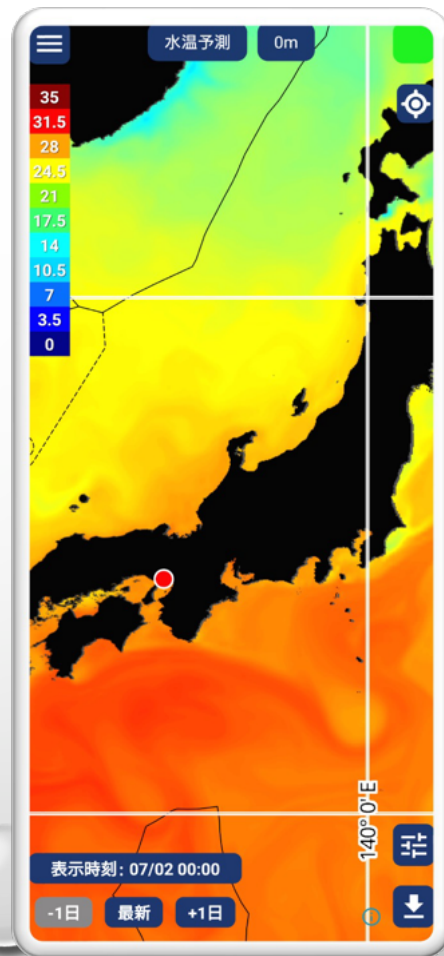
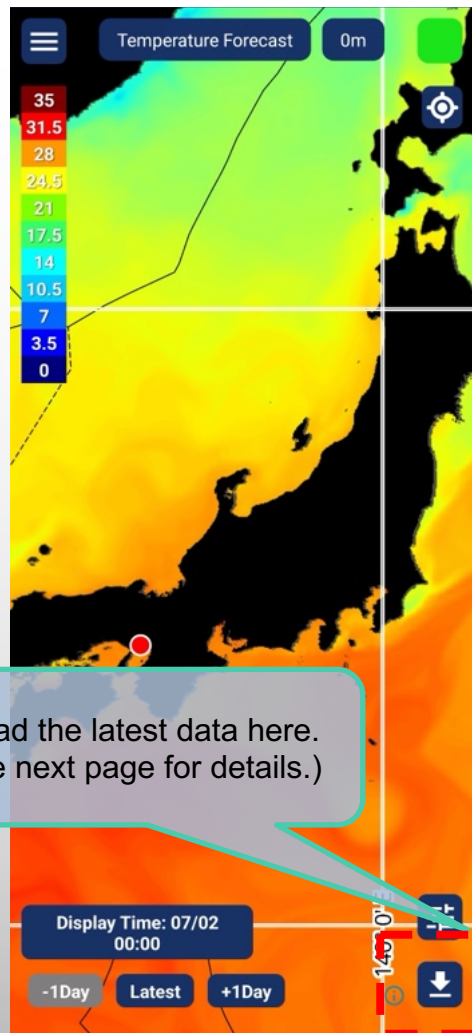


OEview User's Guide

Ocean Eyes Co., Ltd.

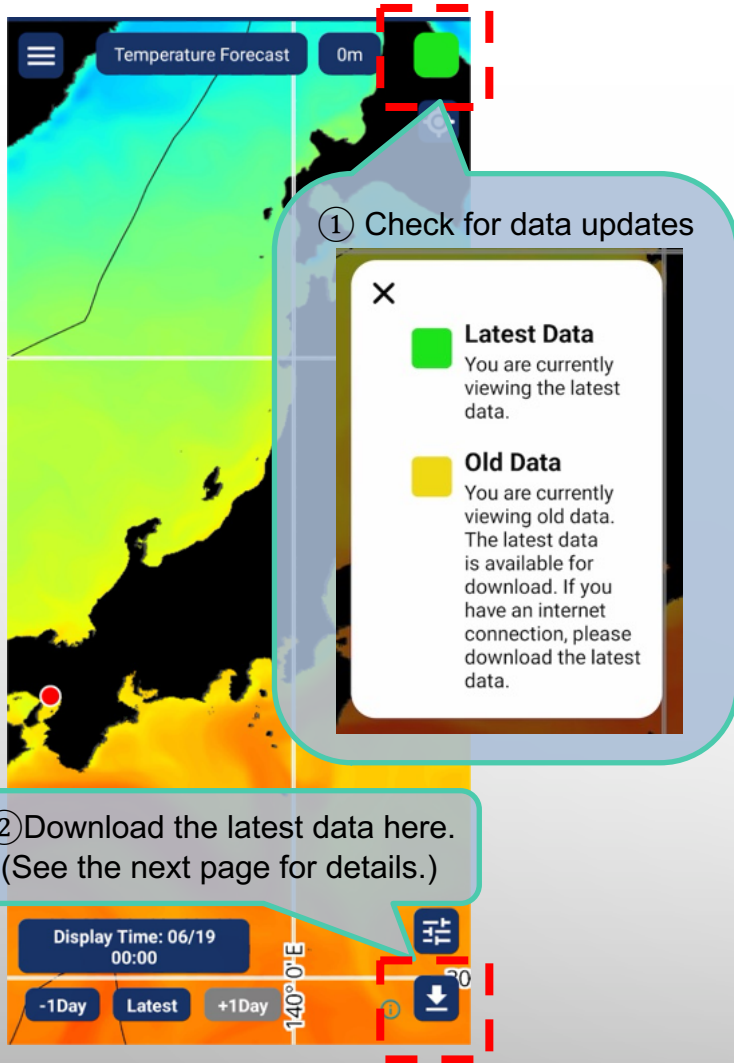




How to use

After launching the app,
please download the latest data
before starting to use it.

- When you launch the app, a map will appear, and your current location will be indicated by a red dot.
- The app uses GPS to display your current location. Depending on signal conditions and device settings, it may take some time to acquire your location.
- You can move the map in any direction by sliding your finger, allowing you to freely access the sea areas you wish to view.
- You can enlarge or reduce the map by performing pinch-in and pinch-out gestures.
- The app can be used offline, even at sea where access to wide-area internet may be limited.



Home

Check The Data Update Status

① Check the data update status by the icon color in the top right corner of the home screen.

- Latest Data
- Old Data

→ please download the data.

② If the icon is yellow, please download the required ocean data while connected to the internet.

※ See pages 9–12 of this user guide for more information on the ocean data.

Home > Map Download

Download The Latest Ocean Data (1)

This app provides access to four types of ocean data. Please select the type of ocean data you wish to use and download it.

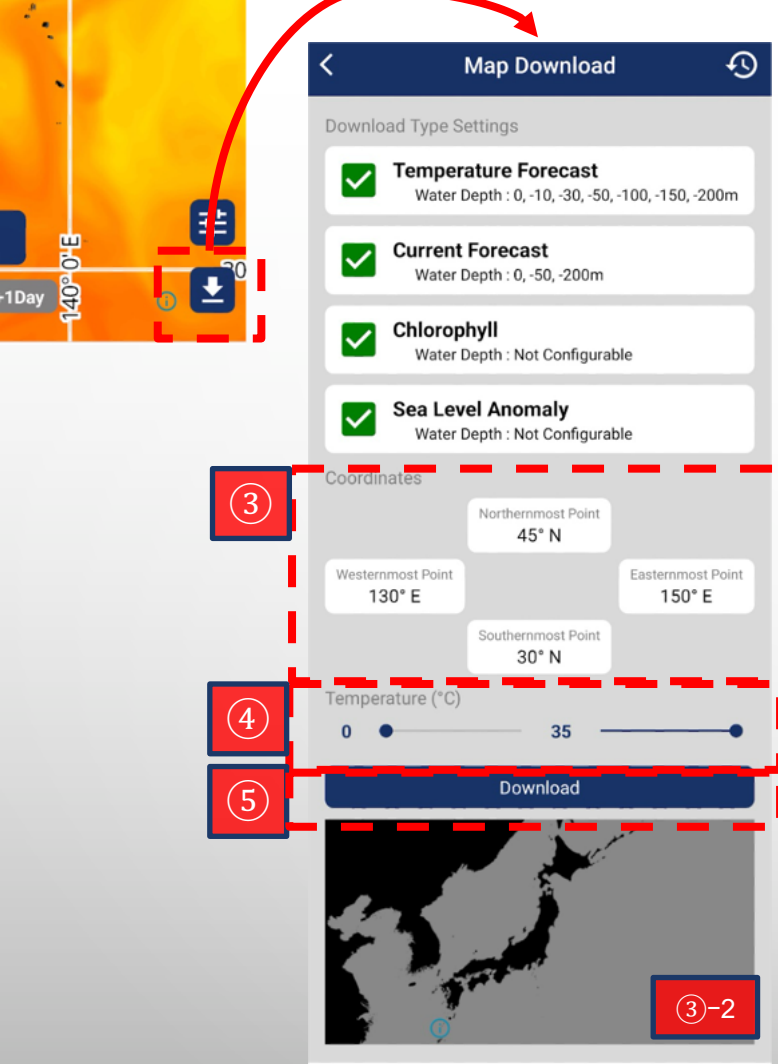
① Temperature Forecast / Current Forecast

- Put a check mark (✓) next to the required data items.
- When you tap each item, the depth setting screen (①-2) will appear. Please set the required depth.
 - You can select multiple items.
 - By default, only 0m is selected.

② Chlorophyll / Sea Level Anomaly

- Put a check mark (✓) next to the required data items.
- You cannot set the depth.





Home > Map Download

Download The Latest Ocean Data (2)

③Coordinates

- Specify the coordinate range.
- When you enter the coordinates, the approximate area will be displayed on the map at the bottom of the screen (③-2).

④Temperature(°C)

- Specify the temperature range (0 °C to 35 °C).
- Adjust the slider to select the desired range.

⑤Download

- Pressing "Download" will start downloading the latest data.
- The data is saved within the app and can be used offline.

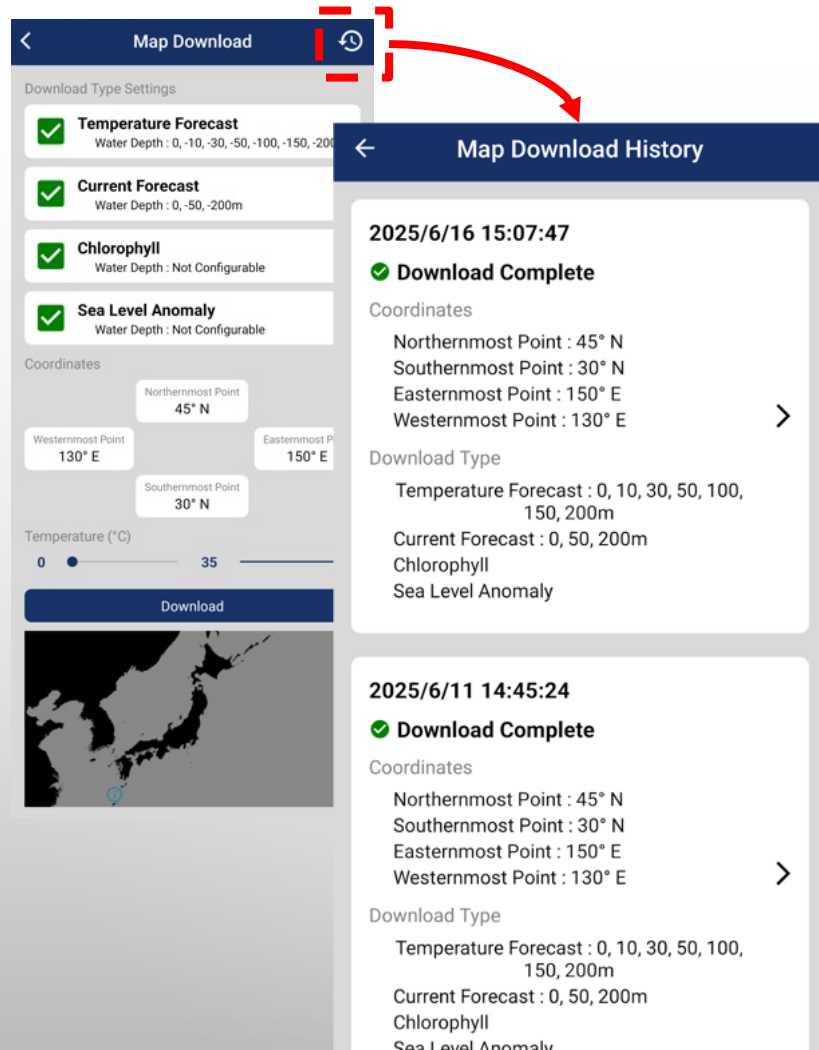
※ By selecting and downloading only the data you need, you can reduce download time and save data usage.

※ The app does not support saving data to user storage.

Home > Map Download > Map Download History

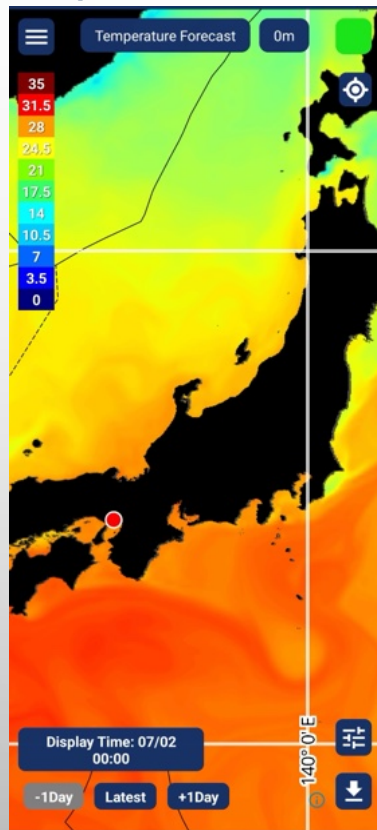
Download The Latest Ocean Data(3)

- You can view the map download history from the icon in the top right corner.
- When the message "Download Complete" appears, the map is ready to use within the app.

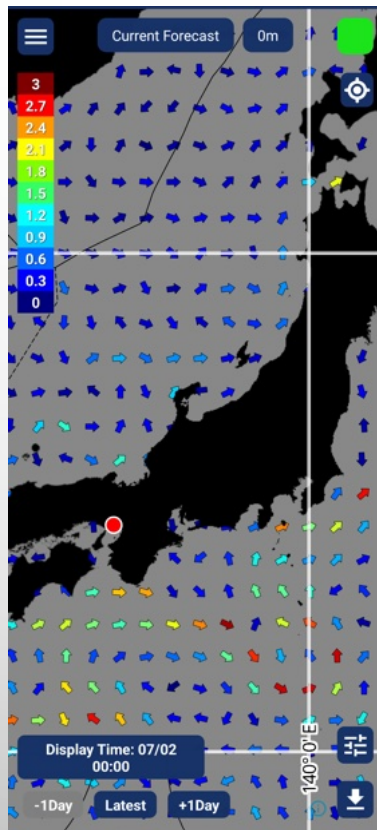


Display Modes on the Home Screen (4 Types)

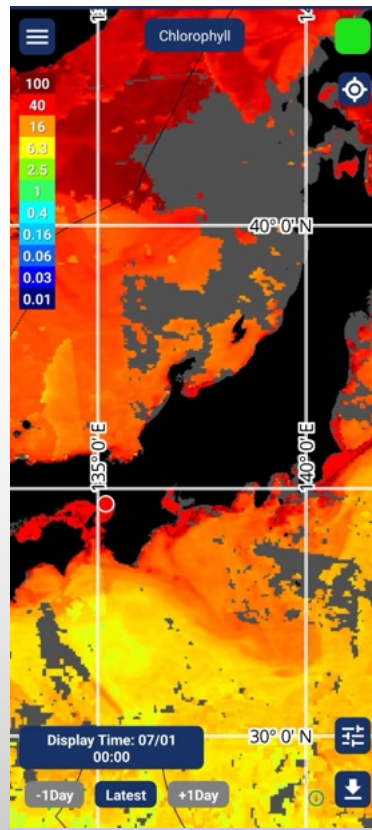
Temperature Forecast



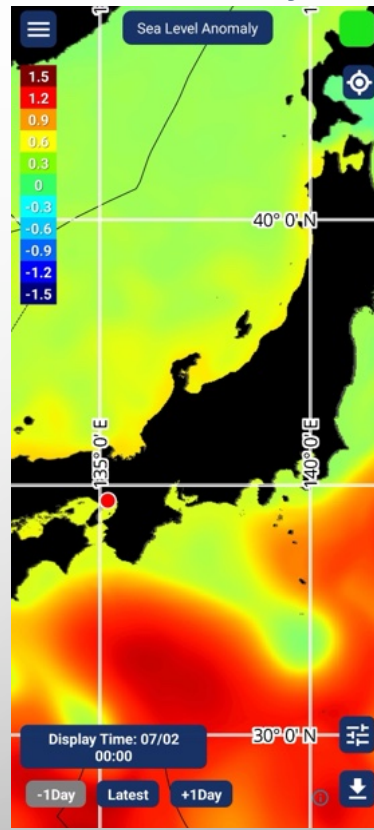
Current Forecast

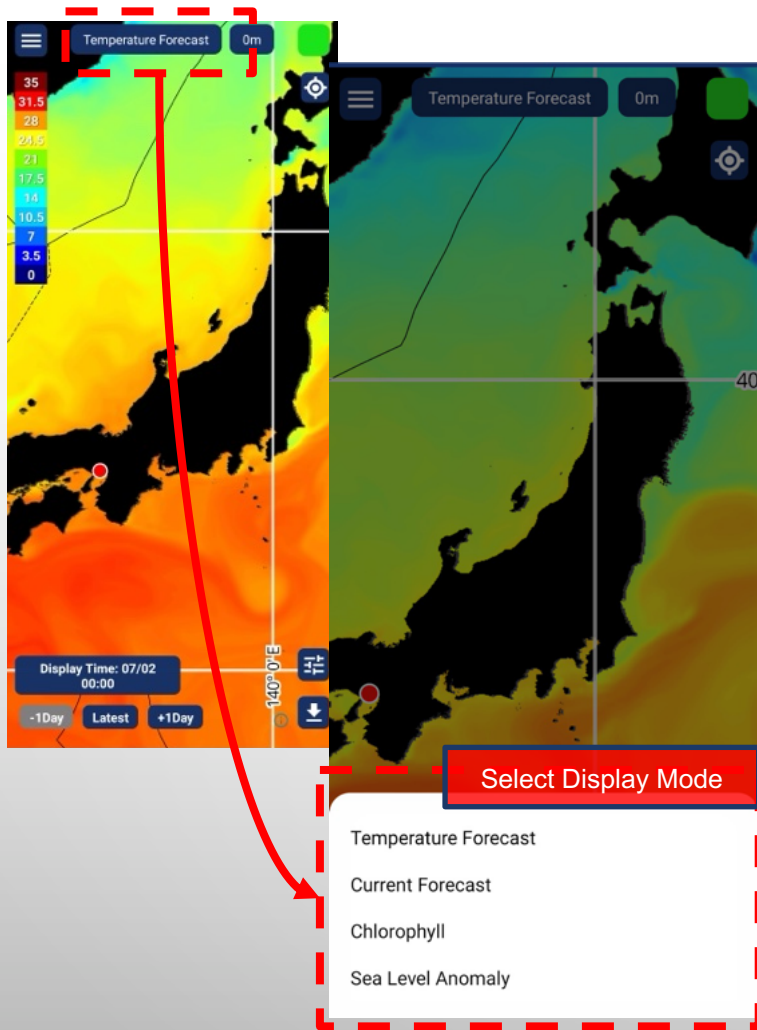


Chlorophyll



Sea Level Anomaly





Home > Select Display Mode

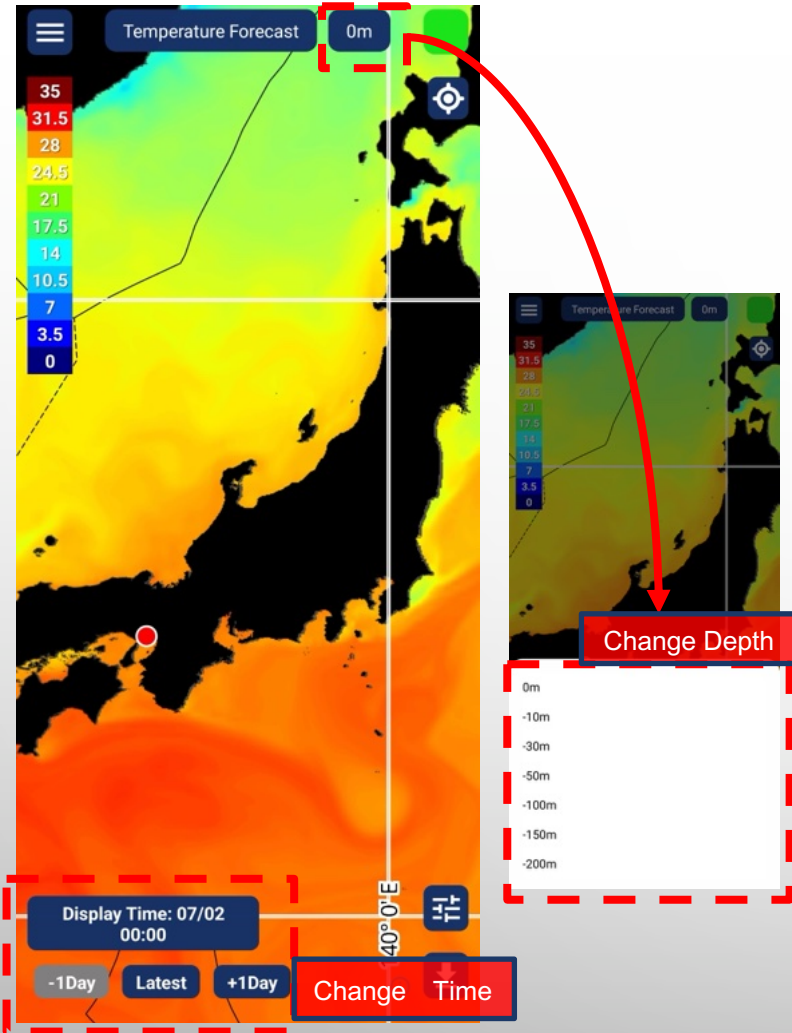
Select Display Mode

- The current "display mode" is shown at the top center of the home screen.
- When you tap the banner, the selection menu appears at the bottom of the screen.
 - Temperature forecast
 - Current forecast
 - Chlorophyll
 - Sea level anomaly
- When you tap the desired display mode, the map on the home screen will change.

Display Mode: Sea Surface Temperature Forecast

Temperature Forecast : Forecast Now to 3 Days Ahead

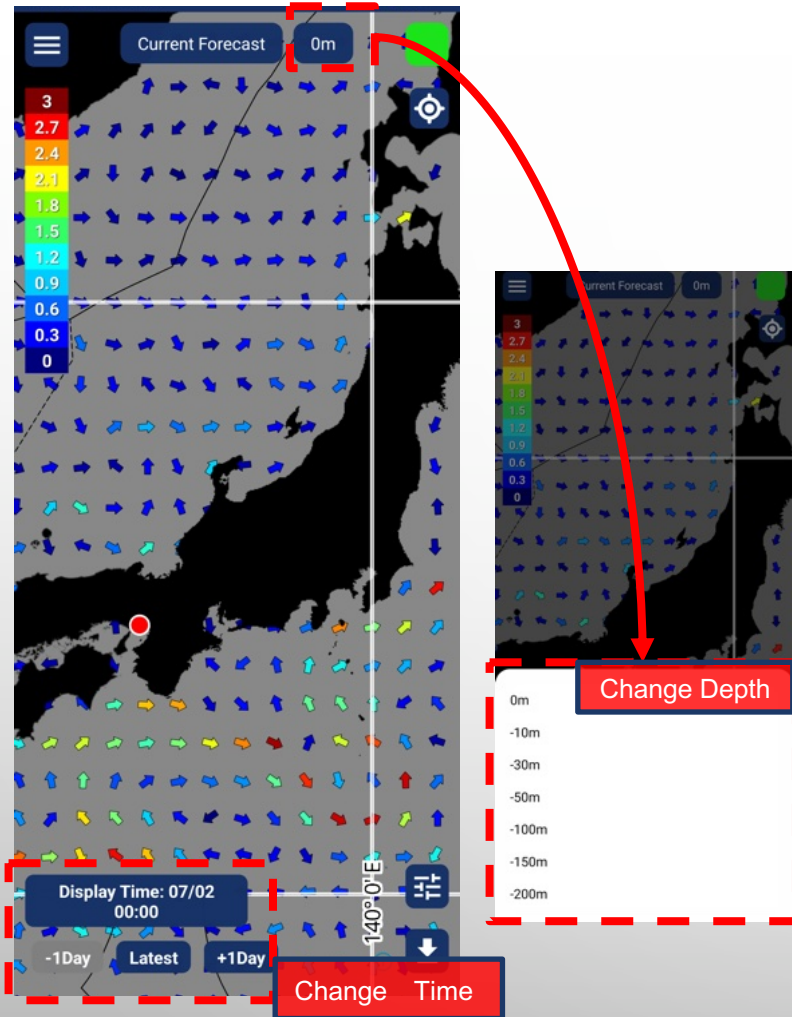
- Temperature forecast is shown up to 3 days ahead.
- At the bottom left of the screen, the time for the displayed data is shown.
- To change the display time, tap the desired icon.
- Past data is not displayed.
- To change the depth, tap the numeric button at the top.
- If the data is not downloaded, the sea surface appears gray.



Display Mode: Current Forecast

Current Forecast : Forecast Now to 3 Days Ahead

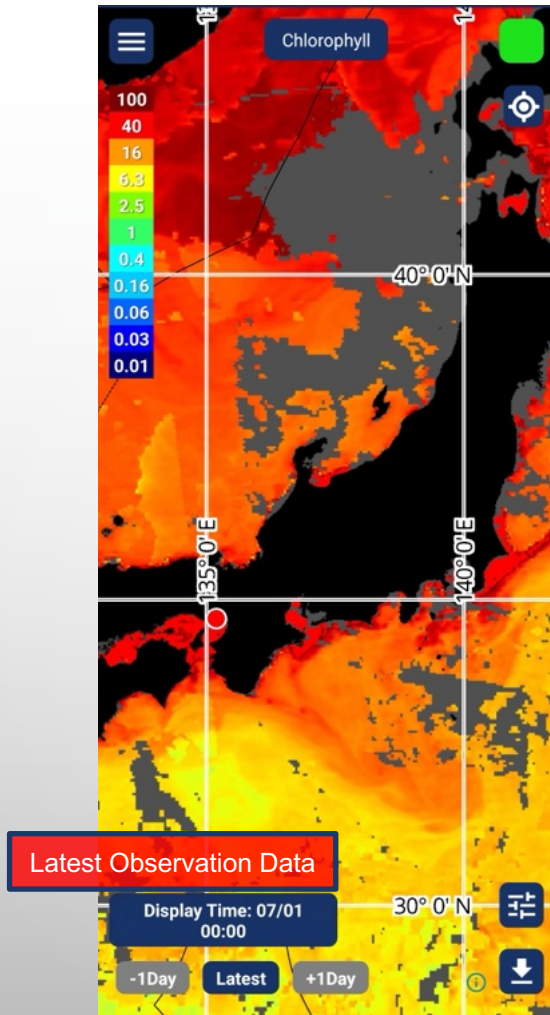
- Current forecast is shown up to 3 days ahead.
- At the bottom left of the screen, the time for the displayed data is shown.
- To change the display time, tap the desired icon.
- Past data is not displayed.
- To change the depth, tap the numeric button at the top.
- If the data is not downloaded, the sea surface appears gray.

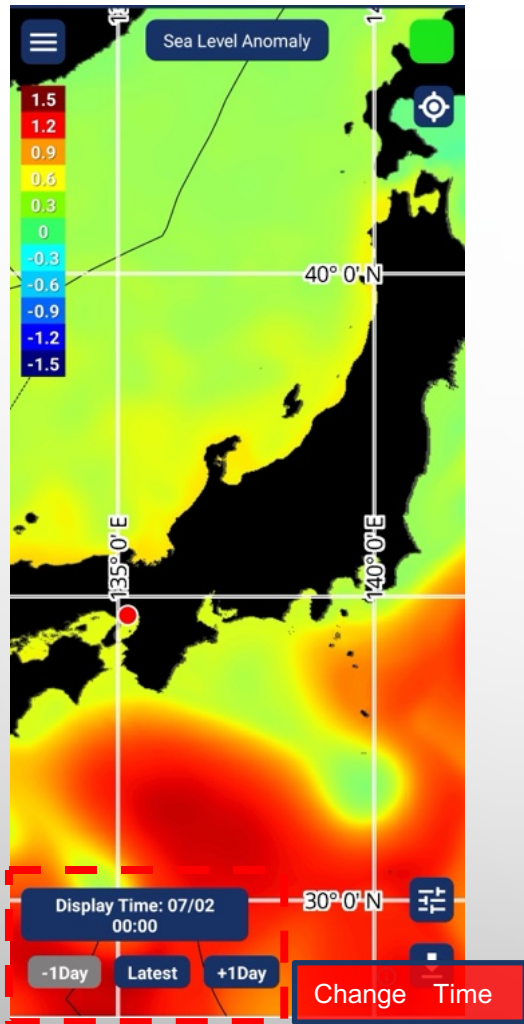


Display Mode: Chlorophyll

Chlorophyll : Latest Observation Data

- Chlorophyll data displays the latest observation data.
- The time of the currently displayed data is shown in the bottom left corner of the screen.
- Observation data is updated once every 24 hours.
- The display time cannot be changed.
- The areas displayed in gray indicate regions that could not be observed by satellite due to cloud cover or similar obstructions.
- If chlorophyll data has not been downloaded, the sea surface will be displayed in gray.

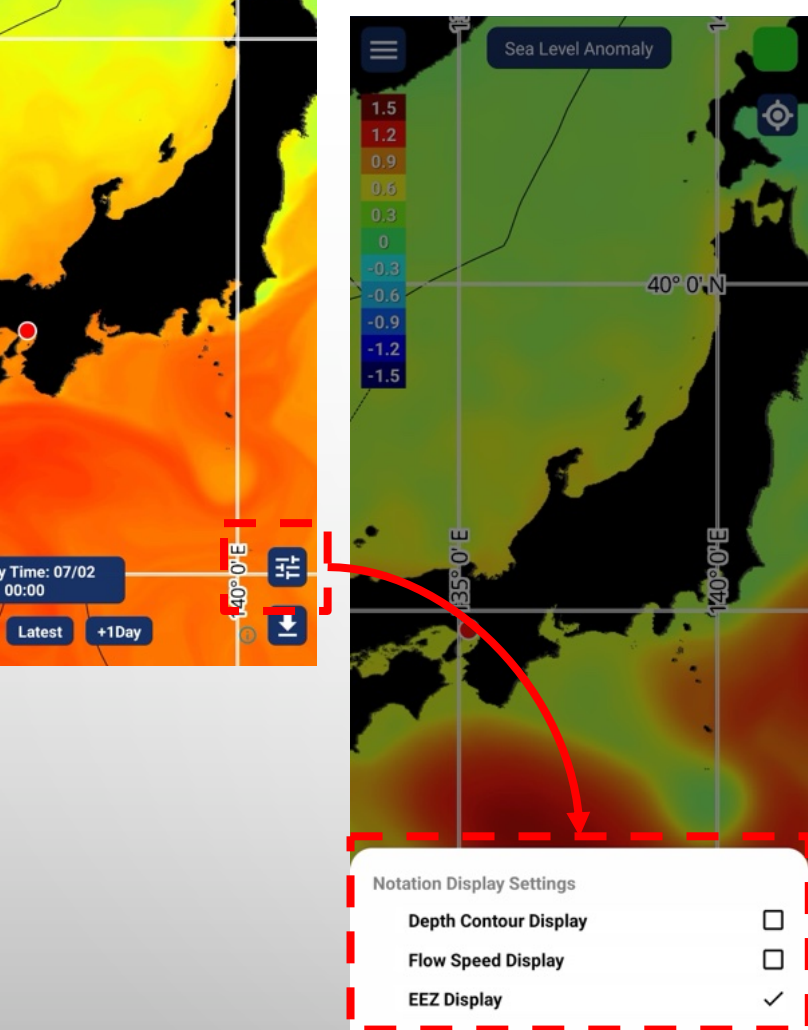




Display Mode: Sea Level Anomaly

Sea Level Anomaly : Forecast Now to 3 Days Ahead

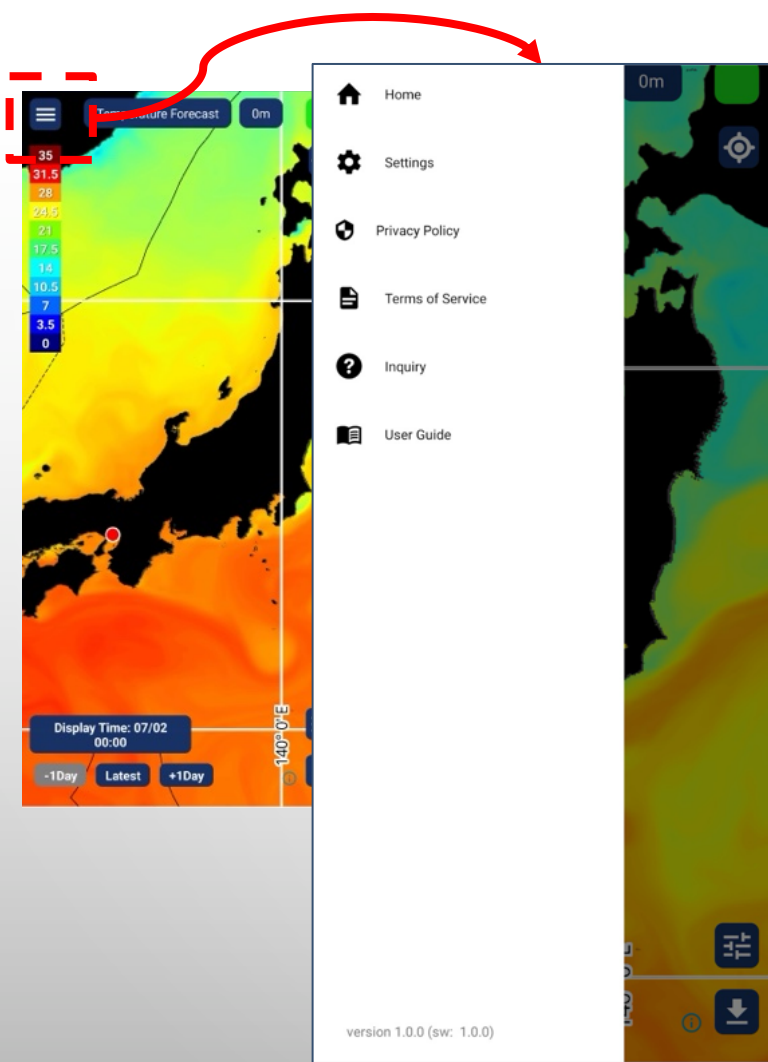
- Sea level anomaly is displayed up to 3 days ahead.
- At the bottom left of the screen, the time for the displayed data is shown.
- To change the display time, tap the desired icon.
- Past data is not displayed.
- If the data is not downloaded, the sea surface appears gray.



Home > Notation Display Setting

Notation Display Setting

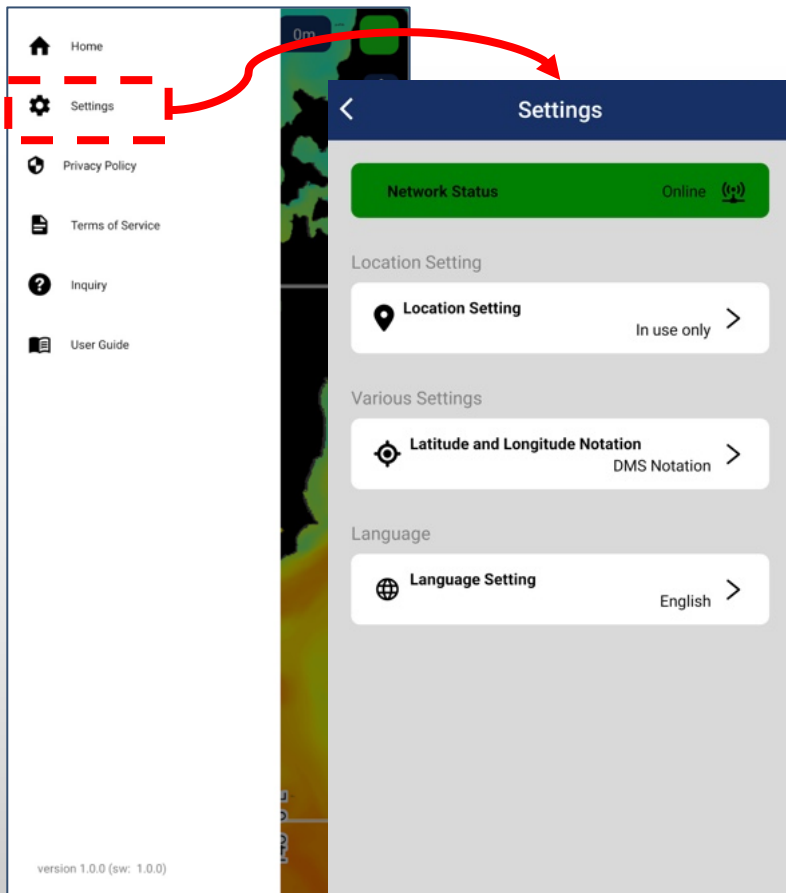
- By tapping the slider icon at the bottom right of the Home screen, you can turn on or off the overlay information displayed on top of the ocean data.
- You can specify the following items.
 - Depth contour display
 - Flow speed display
 - EEZ display
- When you tap the overlay information you want to display, it is applied immediately. A check mark (✓) appears next to the selected overlay.



Home > Menu

Open The Menu Screen

- Tap the "≡" icon at the top left of the Home screen to open the sliding menu.
- The menu includes the following items:
 - Home
 - Settings
 - Privacy policy
 - Terms of service
 - Inquiry
 - User guide

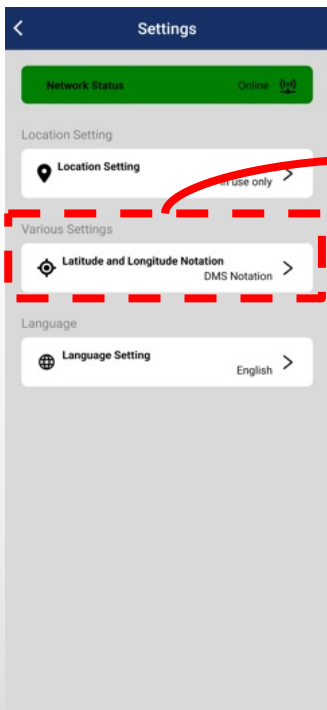


Home > Menu > Setting

Settings

You can check and change various basic settings related to the app's behavior and display.

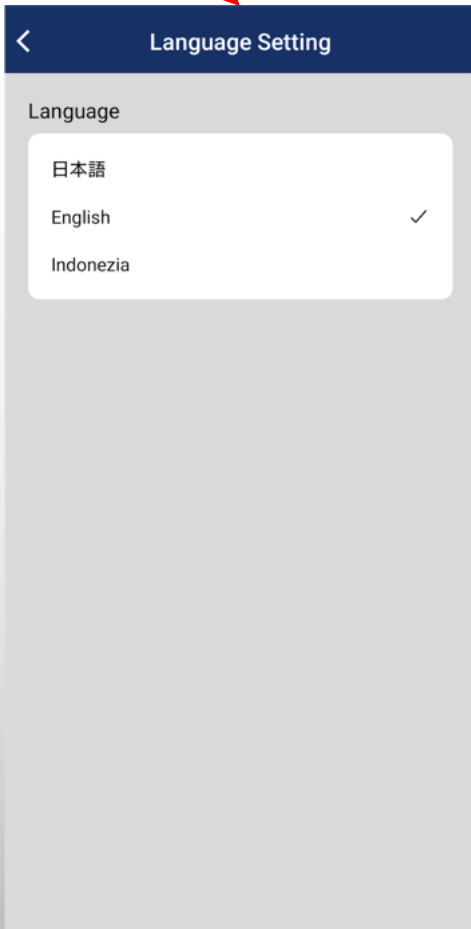
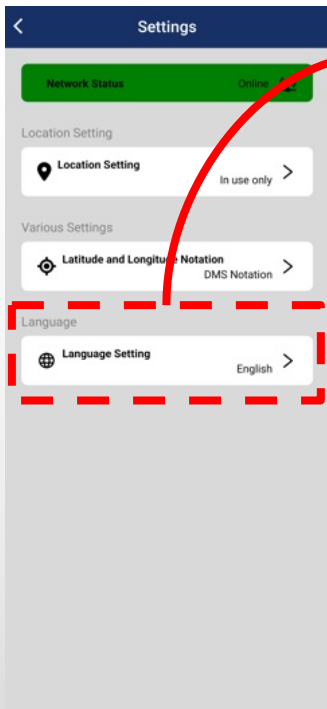
- **Network Status**
 - The current connection status is shown.
 - When it's online (green), you can get and update data.
- **Location Setting**
 - Tap this to open your phone's settings screen.
 - You can set when the app is allowed to access your device's location.
- **Various Setting**
 - Tap to go to the screen where you can select the format for Latitude and Longitude Notation.
- **Language Setting**
 - Tap to go to the screen where you can select the display language.



Home > Menu > Setting >
Latitude and Longitude Notation Selection

Latitude and Longitude Notation Selection

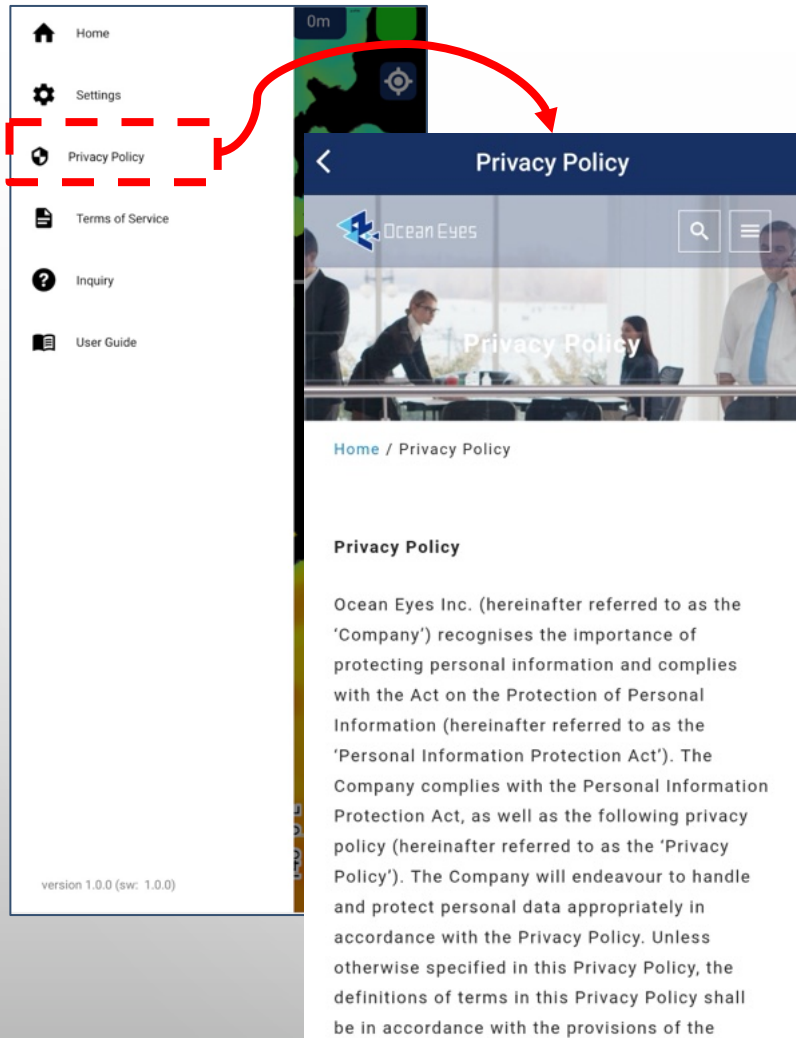
- When you tap "Various Settings: Latitude and Longitude Notation" in the settings screen, you can choose from the following two formats.
 - DMS Notation
 - Degree notation
- Tap the desired format to apply it immediately. A check mark (✓) will appear next to the selected format.



Home > Menu > Setting > Language

Select Display Language

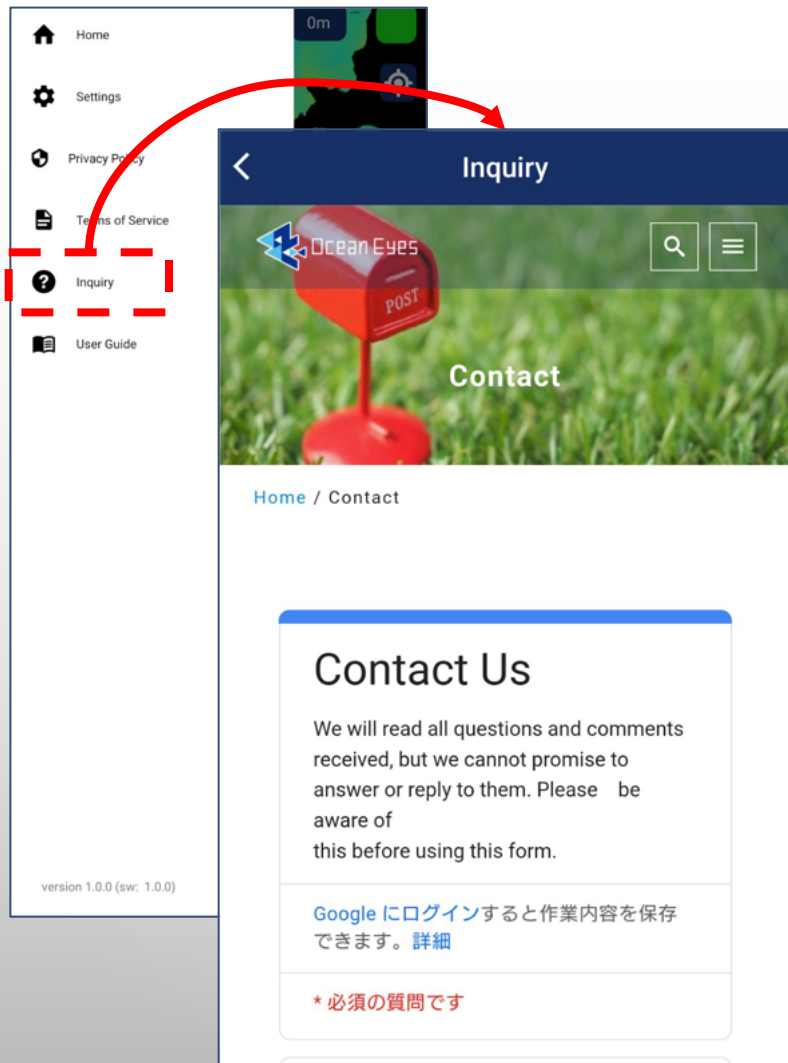
- When you tap "Language Setting" in the settings screen, the language selection screen will appear.
- Please tap the desired language from the displayed list of languages.
- A check mark (✓) appears next to the selected language, and the app's language changes immediately after selection.
- As of June 2025, the following three languages are available for selection.
 - Japanese
 - English
 - Indonesian



Home > Menu > Privacy Policy

Privacy Policy

- When you tap "Privacy Policy" in the menu, you can view the privacy policy for this app.



Home > Menu > Inquiry

Inquiry

- When you tap "Inquiry" in the menu, a contact form will open.
- Please use this form to reach Ocean Eyes Inc., the company that develops and operates this app.